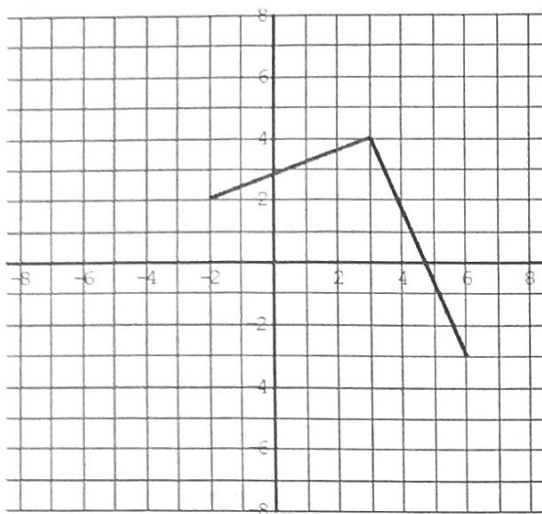


TRANSFORMATIONS LESSON 2

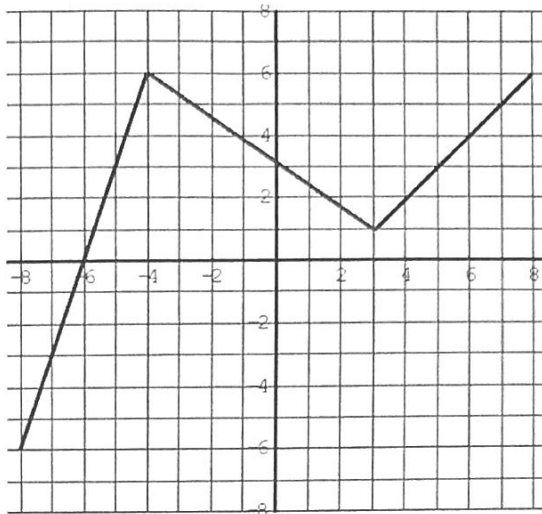
Part II: Combining All Transformations

Questions: For each of the graphs, apply the transformation:

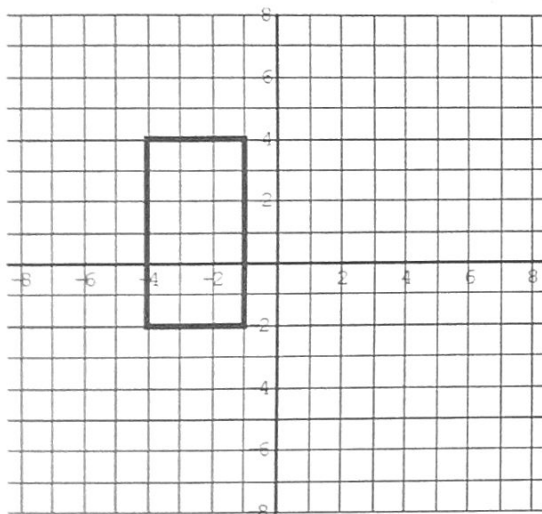
1) $y = -f(2x + 4)$



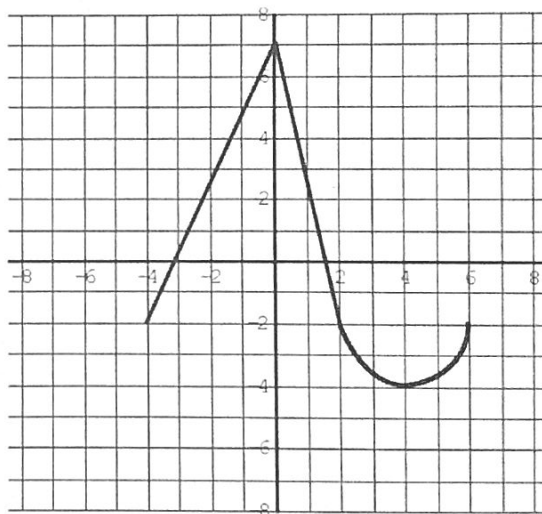
2) $y = -\frac{1}{2}f(-2x)$



3) $y = 2f\left(\frac{1}{2}x\right) - 2$



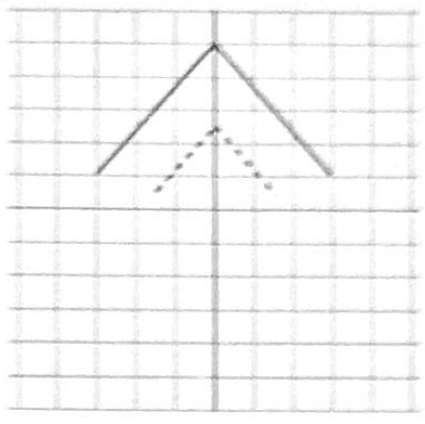
4) $y = -\frac{1}{2}f(2x)$



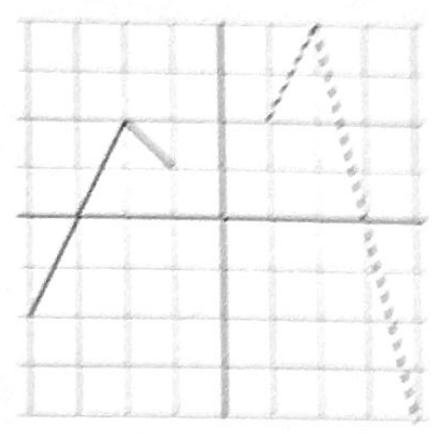
the transformation:

Solid = Original
Dashed = Transformed

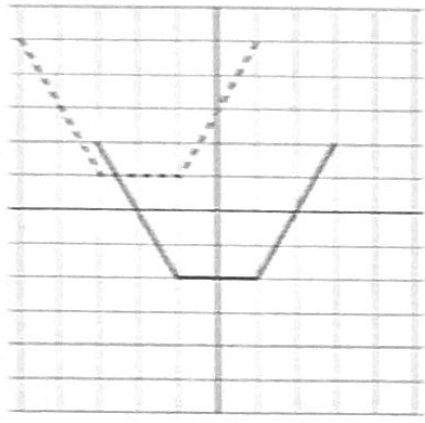
5)



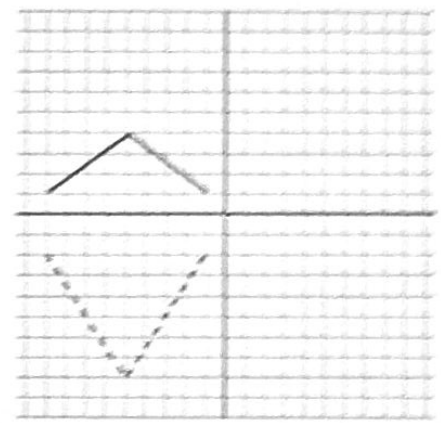
6)



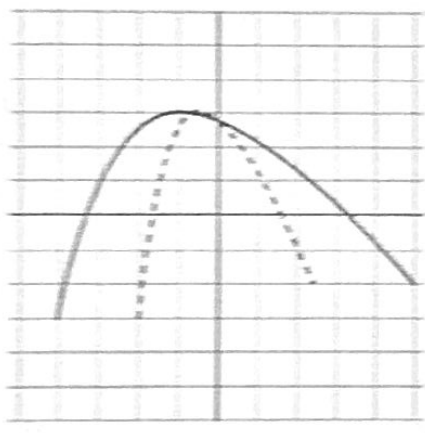
7)



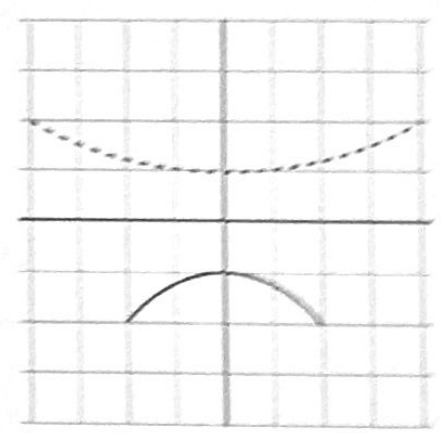
8)



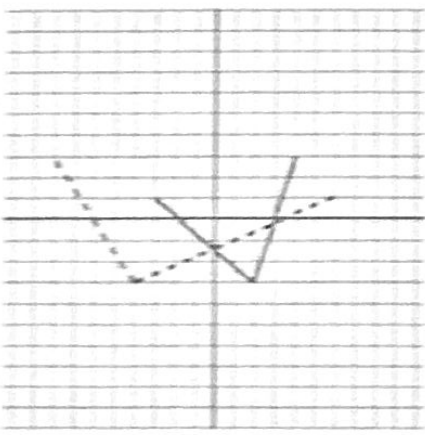
9)



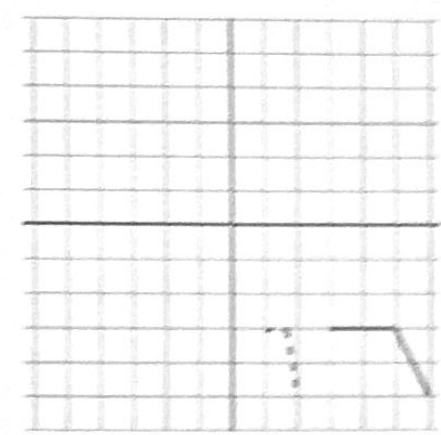
10)



11)



12)



TRANSFORMATIONS LESSON 2

Part II: Combining All Transformations

Questions: For each of the following graphs, write the equation of the transformation:

Solid = Original
Dashed = Transformed

